



# Workpoint™

## Business Process Management with Torque

Organizations across the globe depend on business processes and rules to deliver their products and services. These processes involve virtually any area that keeps a business running, such as customer support, invoicing, supply ordering and product delivery. Although these processes are vital to an organization, many are sophisticated and complex. They can require action from multiple departments and span days or even months. This is where business process management (BPM) becomes a key element.

BPM is the definition, modeling, execution, automation and management of business processes. Organizations worldwide use BPM to coordinate work between people and systems, with the ultimate goal of improving organizational efficiency, responsiveness and reliability.

### The Workpoint Solution

Workpoint is a comprehensive BPM solution. It empowers businesses to react to change by improving their existing processes and systems. Workpoint can be embedded as a component or used as a standalone solution.

Workpoint is industrial-strength BPM offering a flexible, component-based architecture that allows users to model, validate, deploy and immediately use new business processes. The solution coordinates all aspects of a process—people, resources and tools into an integrated, efficient whole.

### Leverage Vital Business Processes

Workpoint has provided dedicated development and customer deployment for more than a decade. With Workpoint, companies can externalize business process logic from the application, easily and quickly change their business processes, and remain confident that each case follows the execution plan.

Workpoint offers several methods for creating process definitions and instances, including open application program interfaces (APIs) and modeling applications. Workpoint also manages, monitors and updates process instances and performs and completes tasks with the ability to deploy Web services.

### Increase Application Flexibility

Workpoint executes, directs and orchestrates the overall business process in strict compliance with business rules. Where appropriate, Workpoint eliminates mundane human activities with automated rule-driven processes. It separates process logic from the application sub-systems that are used to automate or perform specific tasks. Workpoint dynamically links application subsystems together as reusable components via a common business process platform. Moreover, as new components emerge, they can be integrated into existing processes—without recoding, retesting or redistributing the application.

Workpoint also provides functional-level security and a rule execution order. Workpoint's granular security offers the ability to authorize specific operations based upon a given user. The rule functionality allows users to specify, at design time, the order in which the scripts are executed.

### Flexible, Adaptable Component Architecture

Workpoint provides a complete solution to manage enterprise processes. It offers a native Microsoft® version leveraging .NET and a native Java™ version using J2EE.™ Workpoint offers the ultimate in transportability and performance. The engine is platform- and database- independent and integrates both human and automated tasks.

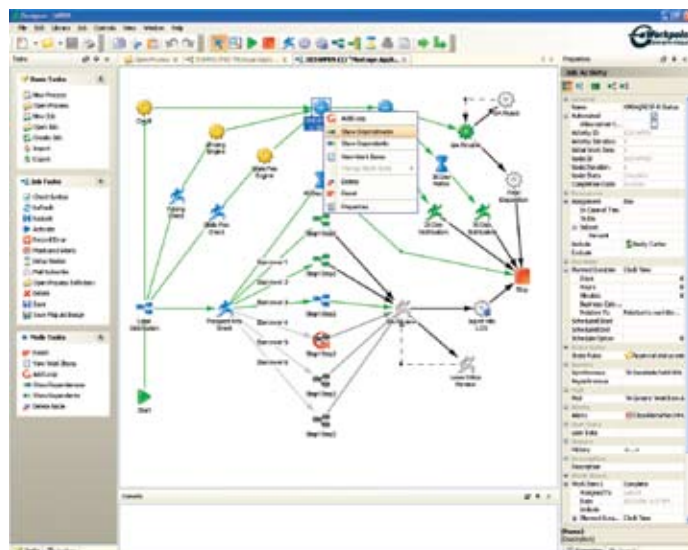
The stateless runtime engines are comprised of component services to execute and manage business process instances, event management, system integration, process automation, manual activities and business rules.

*Workpoint's component architecture offers many core functions:*

#### GUI Process Designer and Monitor

The Workpoint designer provides a graphical process design interface where both business and IT users can define templates or definitions for business processes.

The designer can display multiple process definitions and cases at the same time. All of the designer functions are implemented using the Workpoint client API. Therefore, all or part of the designer functionality can be built into other applications.



*Workpoint Designer*

## GUI Forms Builder

The Workpoint designer also provides a graphical process design interface that allows users to create customer-facing forms for the instantiation of the case and for manual activities of the process model. The forms are auto-generated and ready for immediate use within the Workpoint gateway.

## Dynamic Gateway

The Workpoint gateway provides a way to quickly deploy user-facing screens/applications. It requires no coding yet provides users with a powerful platform for long-term production applications. The gateway is fully integrated with Workpoint activities through the use of XML tags. It also outputs HTML, which can be displayed in any browser or enterprise content management portal.

## Process Manager

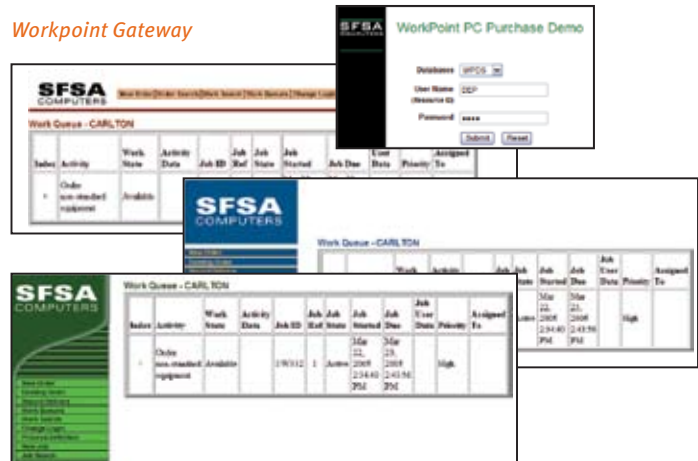
The stateless runtime engine executes, directs and orchestrates the overall business process in strict compliance with business rules. It manages each transfer of responsibility along with event management, process automation and integration of cross-enterprise data and systems.

The multi-platform application server and database-agnostic runtime engine are the workhorse of the system, and integrate all Workpoint components to ensure that the business process is orchestrated against business policy procedures. These components can be combined to meet an organization's specific requirements. This configuration enables any enterprise application to invoke application logic or embed Workpoint functions, such as:

- A Java method access
- Bean-to-bean access
- SQL access
- VB object
- .NET Framework class or application
- COM object
- Web services
- Legacy applications

Process instances with different profiles can move through processes differently as business rules and enterprise metadata dictate. This allows the business to remain in control without sacrificing adaptability.

## Workpoint Gateway



## Relational Knowledge Base

Workpoint uses virtually any relational database as persistent storage, which contains all Workpoint objects, state and history. This audit trail of historical information is invaluable to users for ongoing process improvement.

## Management Console and Reporting

Workpoint provides a set of standard reports, including a graphical display of the status of the application. A management console Web application displays real time information and provides statistics on the Workpoint engine and monitors. The management console can also monitor the state of the server, view and set logging levels, display Workpoint documentation and display various reports.

## Third-Party Process Templates

Workpoint allows customers to import templates from third-party solutions. If an organization has already modeled many of its processes using another application (i.e. Proforma® ProVision, Microsoft® Visio, MEGA Process, CACI SIMPROCESS etc.), then Workpoint can simply import the existing models into its process designer. This enables users to leverage their existing investment and take their process improvements to the next level.



### torque (tôrk)

: a rotational force. *←an automobile engine delivers torque to the drive shaft→*; also : a measure of the effectiveness of such a force that consists of the product of the force and the perpendicular distance from the line of action of the force to the axis of rotation.

### Key Features

- Enables platform and database independence
- Supports native Java and Microsoft engines
- Provides ad hoc routing
- Enables powerful exposed APIs and Web services
- Offers numerous implementation options — embeddable components or standalone solutions
- Enhances performance and transaction integrity
- Provides an intuitive way to graphically model business processes of any scope
- Provides an intuitive way to graphically model user-facing forms linked to manual activities of the process model
- Facilitates a means to create process models and execute them, no matter how complex
- Provides a management console for configuring and managing the runtime environment
- Allows easy access to enterprise application data, wherever it resides
- Queues and distributes work assignments and monitors completion automatically
- Separates process management logic from the application subsystems used to automate or perform specific tasks
- Provides the means to dynamically link subsystems as reusable components
- Orchestrates an organization’s Service-Oriented Architecture (SOA) strategy
- Provides role-based security, authentication and authorization that can restrict user access to specific features and functions

### Workpoint: BPM with Torque

IT environments requiring high performance and high throughput need more than a standard BPM engine, they need a BPM engine with torque. Workpoint is world-class BPM that is differentiated from any other solution on the market today. To date, Workpoint is the only BPM solution with two native engines, offering both a native Microsoft .NET version and a pure Java J2EE version. These interoperable engines, along with a component architecture provide maximum performance and scalability enabling organizations to seamlessly automate, manage and optimize dynamic, high volume business processes across the enterprise. With its powerful, stateless runtime engine, Workpoint is BPM that manages processes throughout the entire lifecycle. It’s BPM with torque.

### About Workpoint, LLC

Workpoint, LLC provides world-class business process management to organizations across the globe spanning various industries, such as healthcare, insurance, manufacturing, banking and retail. Whether used as an embeddable component or as a standalone solution, we provide our customers with the technology to seamlessly automate, manage and optimize dynamic, high volume business processes across the enterprise. Workpoint, LLC is a wholly-owned subsidiary of Planet Group, Inc.

### About Planet Group, Inc.

Planet Group, Inc. is a privately-held corporation and holding company of a diverse group of technology and business solutions companies. This diverse portfolio of companies provides solutions and services, such as information technology consulting, electronic payment processing, business process management and comprehensive electronic correspondence to industry-leading and Fortune 500 companies in the financial services, healthcare, banking, retail, and consumer industrial and technology industries.



Corporate Headquarters • 12809 West Dodge Road • Omaha, NE 68154 phone: 402.964.1999 • fax: 402.964.1967 • www.workpoint.com

Workpoint is developed and supported by Workpoint, LLC, a wholly-owned subsidiary of Planet Group, Inc.  
Workpoint is a trademark of Planet Group Inc. All other companies’ products are trademarks, registered trademarks or service marks of their respective companies.