

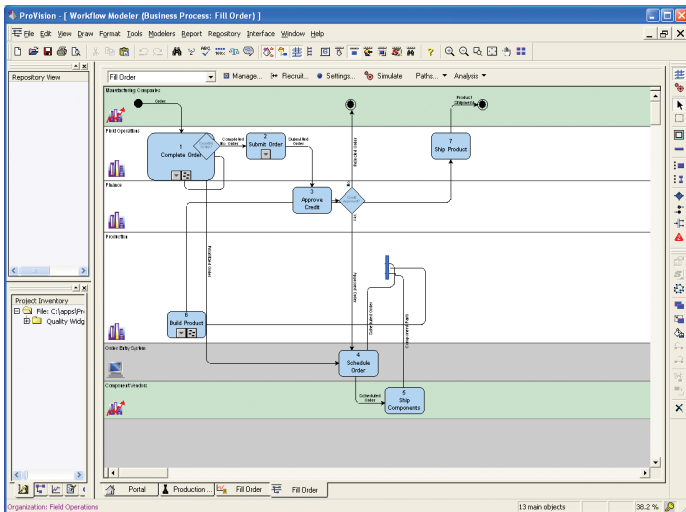
Workpoint™ and Proforma® ProVision®: Bringing BPM & BPA Together

The First Step to Successful BPM

Organizations implementing BPM often begin by evaluating, documenting and modeling their current processes. Through the use of process modeling tools, businesses can graphically illustrate key activities and processes linked to their overall strategies and goals. Process modeling allows organizations to focus on fundamental business dimensions, such as how work is accomplished, who is responsible, how work supports organizational goals and the complexity of the process. By creating business process models, organizations are essentially forced to define what the process is aiming to achieve, and how it aligns with other processes, goals and overall business strategies.

Process modeling and documentation provide substantial insight into key processes. However, process modeling is only the first step. To achieve successful BPM, organizations must progress to process execution, measurement and management. Organizations desiring a best of breed BPM approach ultimately need a common interchange between business modeling and process execution.

Proforma ProVision Process Model



Process models such as the one above allow businesses to fully understand and optimize their processes.

The Best in Process Modeling and Management

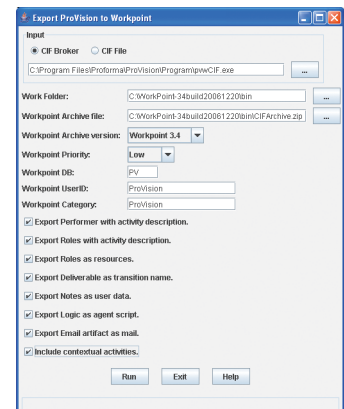
Workpoint™ BPM and Proforma® Corporation's visual modeling tool, ProVision®, have been integrated to offer end users a comprehensive solution capable of modeling and executing cross-enterprise processes in real time. Together, Proforma ProVision and Workpoint enable end-to-end support of business process modeling and BPM.

Workpoint utilizes a Common Interchange Format (CIF) which allows business users to import ProVision models directly into Workpoint's execution engine. With a click of a mouse, process models including resources, e-mails, alerts, rules and orchestration paths seamlessly transfer into Workpoint's BPM engine. With the CIF, Workpoint can support full traceability between business process definitions, the rules that manage them, the technical services forward-engineered to implement them, the legacy systems supporting those business processes and the enterprise repositories that store vital information about those processes. IT personnel can then immediately codify what the business is articulating without the usual discovery process. In other words, ProVision customers can move quickly from modeling to execution, without having to re-key their already defined workflow modelers.

The unique combination of ProVision's modeling tool and Workpoint's powerful execution engine empowers business managers to quickly and easily model, modify and implement end-to-end processes. The combination offers business users and IT staff a means to continually review and enhance enterprise processes and practices throughout their organization, leading to better planning, cost savings and more efficient business operations.

Importing ProVision BPA Models

With Workpoint's CIF, multiple process models can be automatically opened and exported.



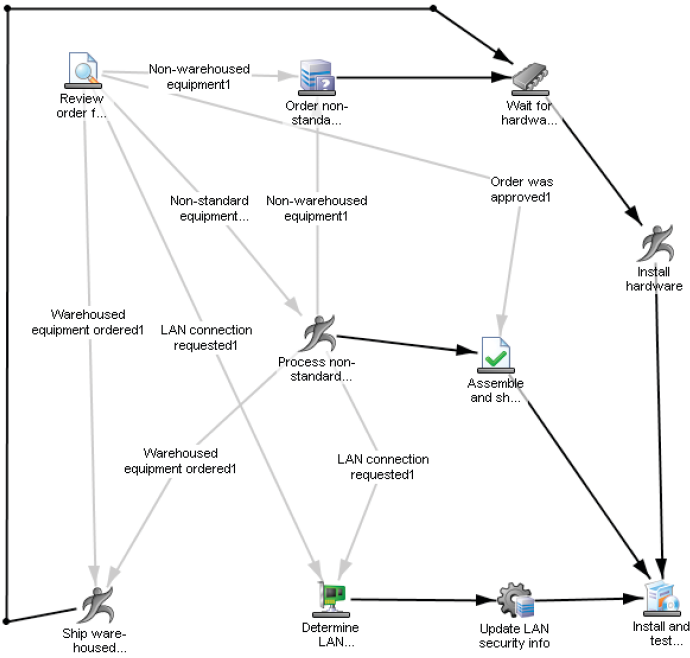
To learn more about this product integration, visit www.workpoint.com or call 888-748-2755.

torque (tôrk)

: a rotational force. ◀an automobile engine delivers torque to the drive shaft▶; also : a measure of the effectiveness of such a force that consists of the product of the force and the perpendicular distance from the line of action of the force to the axis of rotation.

Workpoint Graphical Process Map

Workpoint's graphical process map can import single or multi-layered sub-processes



About Workpoint LLC

Workpoint LLC provides world-class business process management to organizations across the globe spanning various industries, such as healthcare, insurance, manufacturing, banking and retail. Whether used as an embeddable component or as a standalone solution, we provide our customers with the technology to seamlessly automate, manage and optimize dynamic, high volume business processes across the enterprise. Workpoint LLC is a wholly-owned subsidiary of Planet Group, Inc.

About Proforma Corporation

Proforma's enterprise modeling solutions enable effective visual collaboration for business and IT—empowering the agile enterprise. The ProVizion visual modeling environment provides modeling, analysis and simulation tools for all aspects of the enterprise, including strategy, business and technology. Using a model-driven approach, entire organizations can see and evaluate the impact of change and continually manage and deliver improved performance. With Proforma, global enterprises, government agencies and systems integrators achieve success in business process analysis and management, service-oriented architecture, enterprise architecture, simulation, ITIL, requirements analysis, supply chain, Sarbanes-Oxley compliance and Six Sigma.

Workpoint: BPM with Torque

IT environments requiring high performance and high throughput need more than a standard BPM engine, they need a BPM engine with torque. Workpoint is world-class BPM that is differentiated from any other solution on the market today. To date, Workpoint is the only BPM solution with two native engines, offering both a native Microsoft® .NET version and a pure Java™ J2EE version. These interoperable engines, along with a component architecture provide maximum performance and scalability enabling organizations to seamlessly automate, manage and optimize dynamic, high volume business processes across the enterprise. With its powerful, stateless runtime engine, Workpoint is BPM that manages processes throughout the entire lifecycle. It's BPM with torque.



phone: 402.964.1996 • fax: 402.964.1967 • www.workpoint.com

Workpoint is developed and supported by Workpoint LLC, a wholly-owned subsidiary of Planet Group, Inc. Workpoint is a trademark of Planet Group Inc. All other companies' products are trademarks, registered trademarks or service marks of their respective companies.